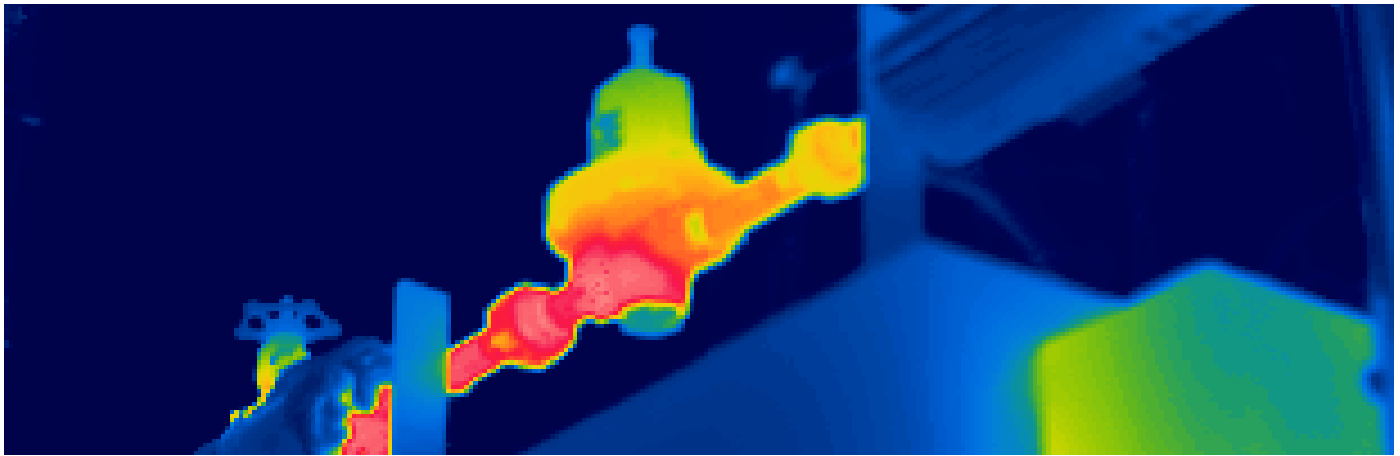


# Steam Traps— Controlling energy losses easily



## Knowing the status of your steam traps can save energy

Steam traps are automatic valves used to remove condensate, air and other non-condensable gases while preventing the passing of steam. Recent estimates by the Department of Energy indicate that approximately 20% of the steam leaving a central boiler plant can be lost via leaking steam traps in businesses without proactive assessment programs.

Assessment programs will answer the following two questions:

1. Are your traps working correctly?
2. If not, has the trap failed in an open or closed position?

If the trap has failed closed, no energy is being wasted. However, no heat or reduced heating is available. If the trap has failed open, steam passes through the trap without providing its maximum heating potential, wasting energy. Also, steam can escape through the system vent if it doesn't condense in the return system. These issues will increase your operating costs —

requiring additional makeup water and the associated chemical treatment.

Trap repair/replacement costs depends on a number of factors which need to be evaluated for your project. The amount of savings to be obtained by maintaining or replacing traps depends on these factors. To find out more, contact us for tips on how to evaluate your energy savings potential.



For more information, please contact the Energy Services Department at 302.736.7894.